



SPSSC
Student Programs and Services
Steering Committee

SPSSC Committee Meeting

March 7-8, 2019

General Information and Access

- ListServe: spssc@lists.ccsesa.org
 - *You must have permission – sign up sheet is circulating*
- SPSSC Page on CCSESA Website: <http://ccsesa.org/>
 - *You need a login to access this page – sign up sheet*
- Consuelo Villalobos, Executive Assistant
- Easel Topics – focus first thing on Friday



Please Introduce Yourself

- Name
- COE
- Position
- Please complete this sentence (can be personal or professional). “I am inspired by.....”



Topics for 2019 of Greatest Interest to the Committee

- **DASS-** Accountability and Differentiated Assistance
- **Transition Services** for students leaving programs
- **CTE Programs** for Court and Community Schools
- **Effective Curriculum** for Court/Community School students
- Effective examples of **collaboration across agencies** for At Risk youth
- **Geographic Leads** and support for Court/Community Schools
- **CCEE** – Support for Court/Community Schools





SPSSC
Student Programs and Services
Steering Committee

Update on CDE and CCSESA Activities

March 7-8, 2019 SPSSC Meeting

CDE Update on Accountability

Feedback from Jenny Singh, CDE

- Will COEs be held accountable for special needs students enrolled in COE Special Education programs or will the accountability be that of the DOR?
 - *We are still obtaining feedback on this issue from various stakeholder groups. We do anticipate implementing a business rule to return students back to the district of residence.*
- Will additional CCI measures be in place for DASS schools for the Fall 2019 Dashboard?
 - *The only DASS CCI measure that we will be able to implement for the 2019 Dashboard will be for SWD who participate in the workability program or receive transitional services through the district of residence.*
- Will there be some kind of flexibility for Chronic Absenteeism for our medically fragile students?
 - *We are still obtaining feedback on this issue.*



SBE Agenda Items March 13-14, 2019

- Indicator 17: State Systemic Improvement Plan (Special Education)
- Update on California's System of Support
 - Overview of Lead Agencies and their roles
 - Overview of meeting on Feb 12th and March 6th planning meeting (with CDE/CCEE) and stakeholders
 - Overview of various agencies focuses on improvement (Fresno, San Diego, Twin Rivers)
- CAASPP/ELPAC Update
- CTEIG: Approval of allocation formula, # of awards, purposes of funds, allowable expenditures and list of grant amounts
- Approval of the California Computer Science Strategic Implementation Plan
- Local Priority 3: Parental Involvement and Family Engagement - Revised Self-Reflection Tool
 - Former Self-Reflection offered the opportunity to administer a survey or provide a narrative related to at least one measurement that the LEA determined was indicative of parent/family engagement
 - New tool requires responses to three areas: Building Relationships Between School Staff and Families, Building Partnerships for Student Outcomes, and Seeking Input for Decision Making
 - After completing a self-rating on 4 items in each of the 3 areas, LEAs must briefly describe current strengths and progress in each area, and identify a focus area for improvement, including how the LEA will improve the engagement of underrepresented families.



SPSSC
Student Programs and Services
Steering Committee

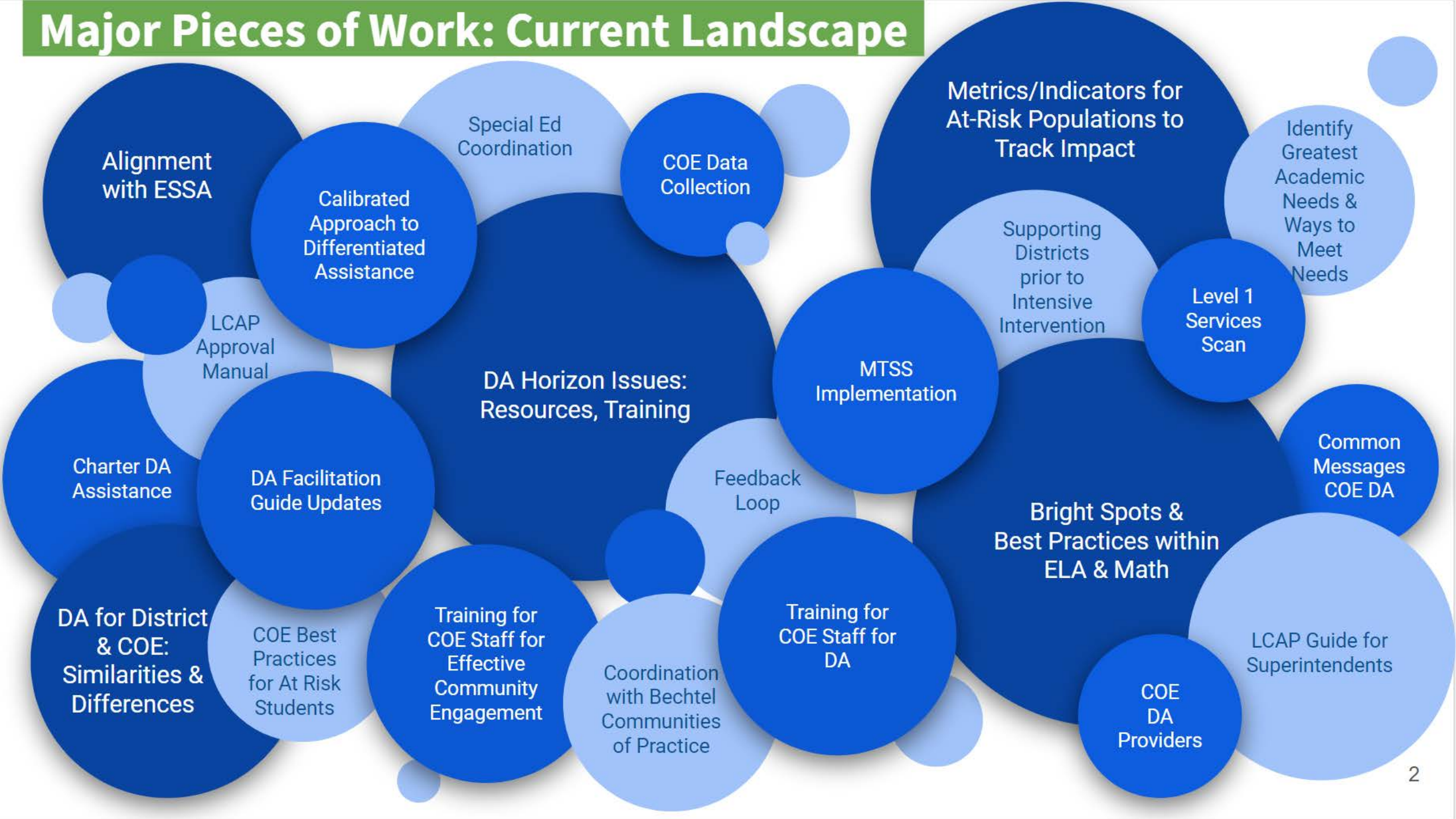
CCSESA System of Support Coordinating Committee



SPSSC
Student Programs and Services
Steering Committee

Why?

Major Pieces of Work: Current Landscape



CCSESA System of Support Coordinating Committee

Purpose of the CCSESA System of Support:

- To share information and strategically plan within CCSESA for the work ahead.
- To establish a structure for coherent communication and consistent feedback loops within CCSESA, county offices, and Steering Committees.
- To ensure resources are available ahead of when they are needed to support county offices, districts, and schools statewide.



CCSESA System of Support Coordinating Committee

Top six priorities (based on feedback from COEs)

Develop recommendations that create coherence and alignment between data analysis and improvement plans (how the PIR, ESSA, LCAP, budget summary, etc all overlap)
Determine horizon challenges where resources and/or trainings are needed (forward thinking/ planning).
Consider if the accountability measures on the Dashboard are the right ones to identify districts in need of assistance and make recommendations to the Statewide System of Support.
Ascertain how to best utilize Improvement Science and Implementation Science in working with districts for improvement.
Coordinate with Special Ed directors at CDE, CCEE and SELPA System Improvement Leads and SELPA Content Leads.
Scan COEs statewide to see what services are being offered as part of Level 1 and share across counties.



Teaching & Learning Advisory - Top 5 Priorities for 2019 (in priority order)

Consider what special education should look like in 3 years and begin to develop strategies to reach that vision.

Consider greatest need student groups (SWD, etc.) and work with CISC Sub-committees to identify best practices and "bright spots" from across the state.

Consider how MTSS is being implemented across districts and create recommendations for next steps.

Develop list/bank of evidence based resources and practices for each priority area (similar to the work we did for the LEA self assessment) but focused on content related to priority areas rather than systems.

Identify greatest needs academically and propose ways to meet those needs.

Continuous Improvement Advisory - Top 6 Priorities for 2019 (in priority order)

Develop recommendations that create coherence and alignment between data analysis and improvement plans (how the PIR, ESSA, LCAP, budget summary, etc all overlap)

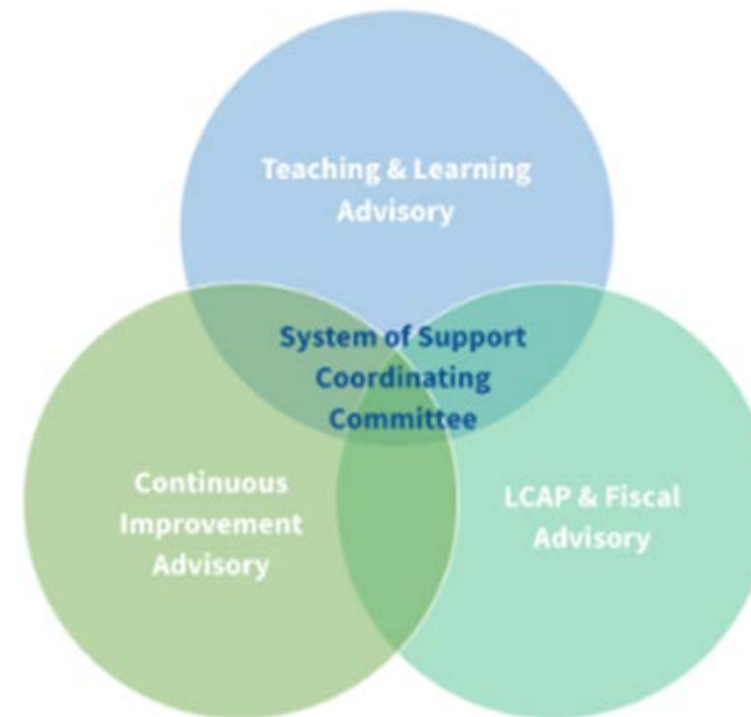
Determine horizon challenges where resources and/or trainings are needed (forward thinking/planning).

Consider if the accountability measures on the Dashboard are the right ones to identify districts in need of assistance and make recommendations to the Statewide System of Support.

Ascertain how to best utilize Improvement Science and Implementation Science in working with districts for improvement.

Coordinate with Special Ed directors at CDE, COEE and SELPA System Improvement Leads and SELPA Content Leads.

Scan COEs statewide to see what services are being offered as part of Level 1 and share across counties.



LCAP & Fiscal Advisory - Top 5 Priorities for 2019 (in priority order)

Develop recommendations that create coherence and alignment between different plans that will be required (how the PIR, ESSA, LCAP, budget summary, etc all overlap)

Provide suggestions for new LCAP template for the new 3-year plan.

Identify and recommend common metrics and leading indicators to show impact for at-risk and high-need student populations.

Identify and create venues to share best practices from across COEs to better meet the greatest needs for improvement as shown in COE Dashboard data.

Recommend updates for LCAP Guide for Superintendents based on changes for the 2019-20 LCAP.

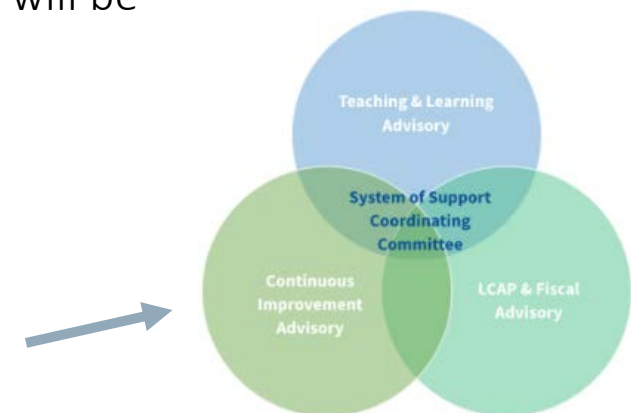
Continuous Improvement Advisory Committee

Chair: Steve Herrington (Sonoma)

Big Ideas:

- As we think about the CA Statewide System of Support, this group will consider what is **working** and where **improvements** are needed with the *design of this system* from perspectives of COEs.
- In relation to Differentiated Assistance, this group will be planning toward **what is needed** as we look toward the next couple of years.
 - Training
 - Resources
- Throughout the current year's work with Differentiated Assistance, this group will be gathering **data**, garnering **feedback**, and recommending **common messages** to be shared with various audiences.

All meetings will be open to any county office staff who may be interested in participating.



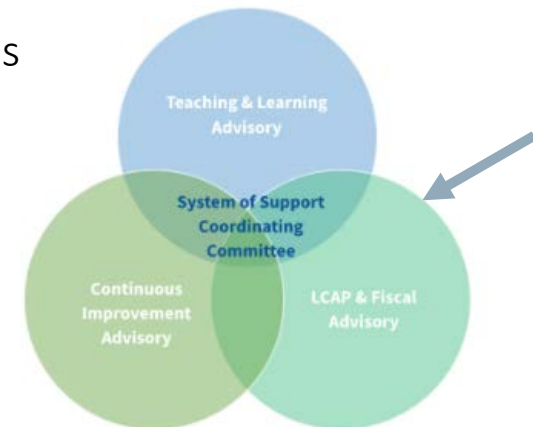
LCAP and Fiscal Advisory Committee

Chair: Dave Gordon (Sacramento)

Big Ideas:

- Considering all that goes into the LCAP and budgeting processes, this group will consider what is **working** and where **improvements** are needed with *plan design and implementation*.
- Recommendations will be developed for **improvements** in plan documents and in coordination between plans.
- This advisory group will gather information to determine where greater **consistency** is needed in plan review and approval.
- This advisory will determine how best to share **effective processes** for community engagement, effective uses of one-time funds, and other plan alignment practices across COEs.

All meetings will be open to any county office staff who may be interested in participating.

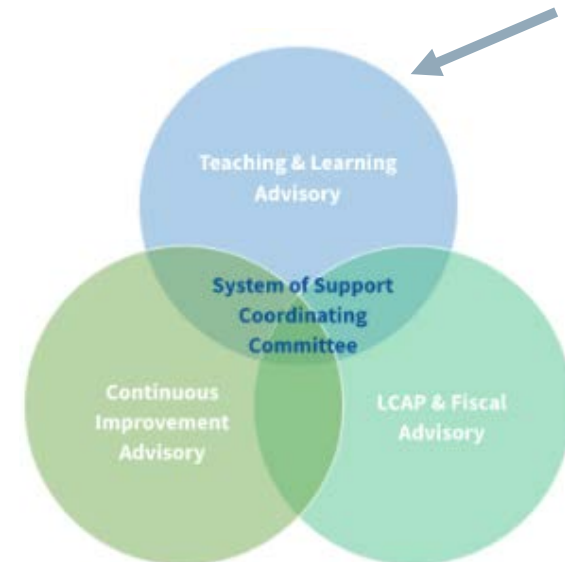


Teaching and Learning Advisory Committee

Chair: Susan Salcido (Santa Barbara)

Big Ideas:

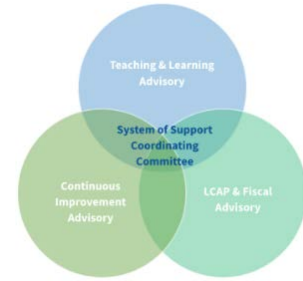
- Teaching and Learning should be **central** to our work as we strive to help each school and district increase outcomes for students.
- Using the data we have available on **greatest needs statewide**, we want to be on the forefront of developing/proposing ways to **meet** those needs using evidence based resources and practices.
 - Multi-Tiered System of Support (MTSS)
 - Bechtel Communities of Practice (Math & Science)
 - Support for Students with Disabilities (SWD) as well as other student groups identified with significant gaps in performance.



All meetings will be open to any county office staff who may be interested in participating.

Teaching and Learning Advisory Committee

SPSSC Member: Mary Ellen Johnson, Chair Elect (San Bernardino)



For the next meeting, Steering Committee representatives have been asked to share a proposed agenda for the next 2 years.

Information to Support this Work:

- Specific Role of SPSSC (from SPSSC Protocols and Guidelines)
- Areas of Interest identified by SPSSC
- Main goals of Teaching and Learning Advisory Committee
- Proposed and approved Goals for SPSSC 2018

Desired Outcomes:

- Suggested updates (if needed) to our 2018 Goals.
- An overview of a two-year plan for areas of focus for SPSSC – identify areas of alignment with the Teaching and Learning Advisory if possible