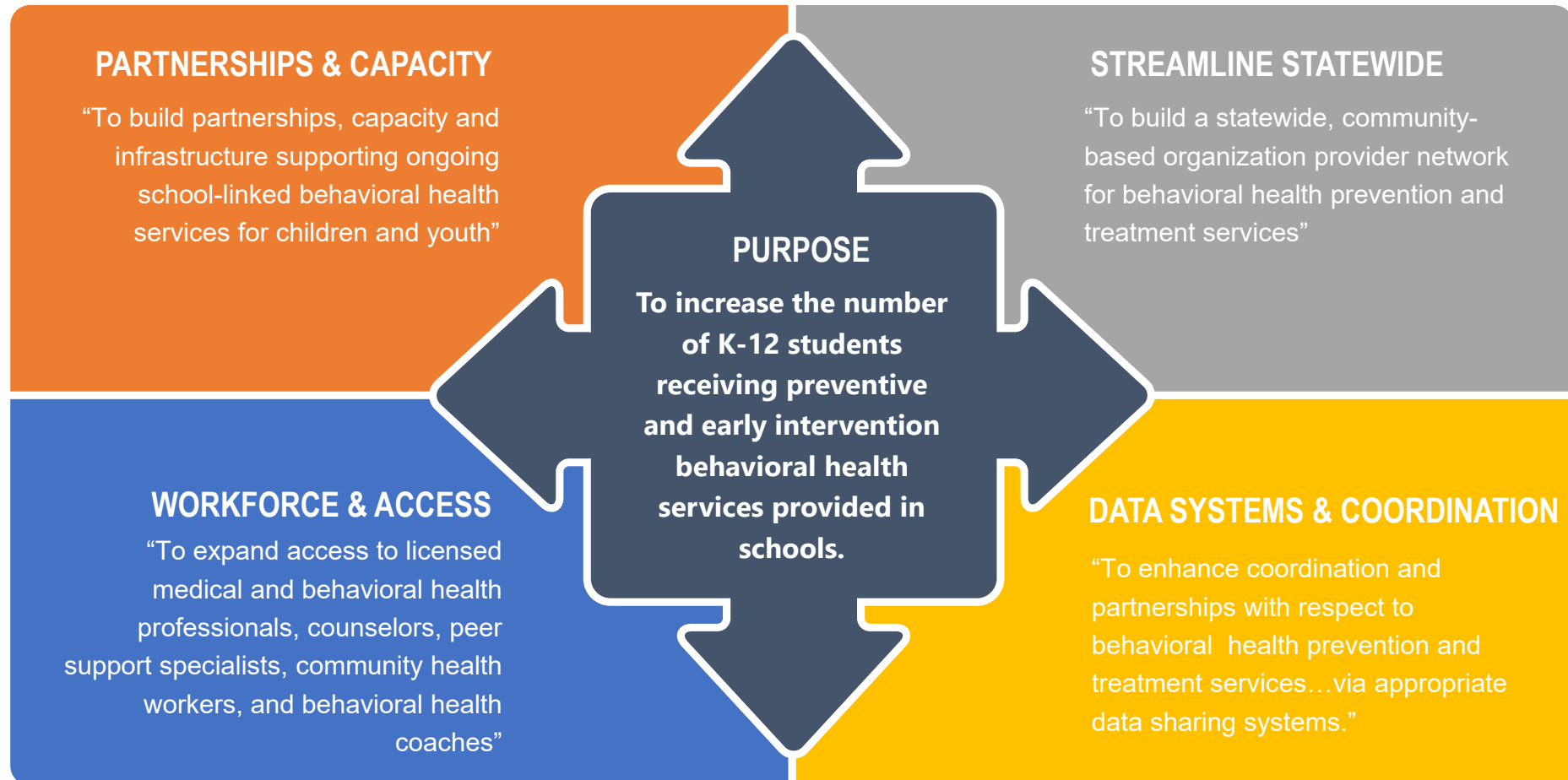


# \$4B CHILDREN AND YOUTH BEHAVIORAL HEALTH INITIATIVE

---



# CHILDREN AND YOUTH BEHAVIORAL HEALTH INITIATIVE

6 PIECES DIRECTLY RELATED TO SCHOOLS

**01.**

MCO INCENTIVE  
PAYMENTS - \$400M

**02.**

PARTNERSHIPS, INFRASTRUCTURE  
& CAPACITY GRANTS - \$550M

**03.**

WORKFORCE DEVELOPMENT  
GRANTS - \$ 448M

**04.**

BEHAVIORAL HEALTH COACHES -  
\$352M

**05.**

REIMBURSEMENT FOR SCHOOL-  
BASED SERVICES

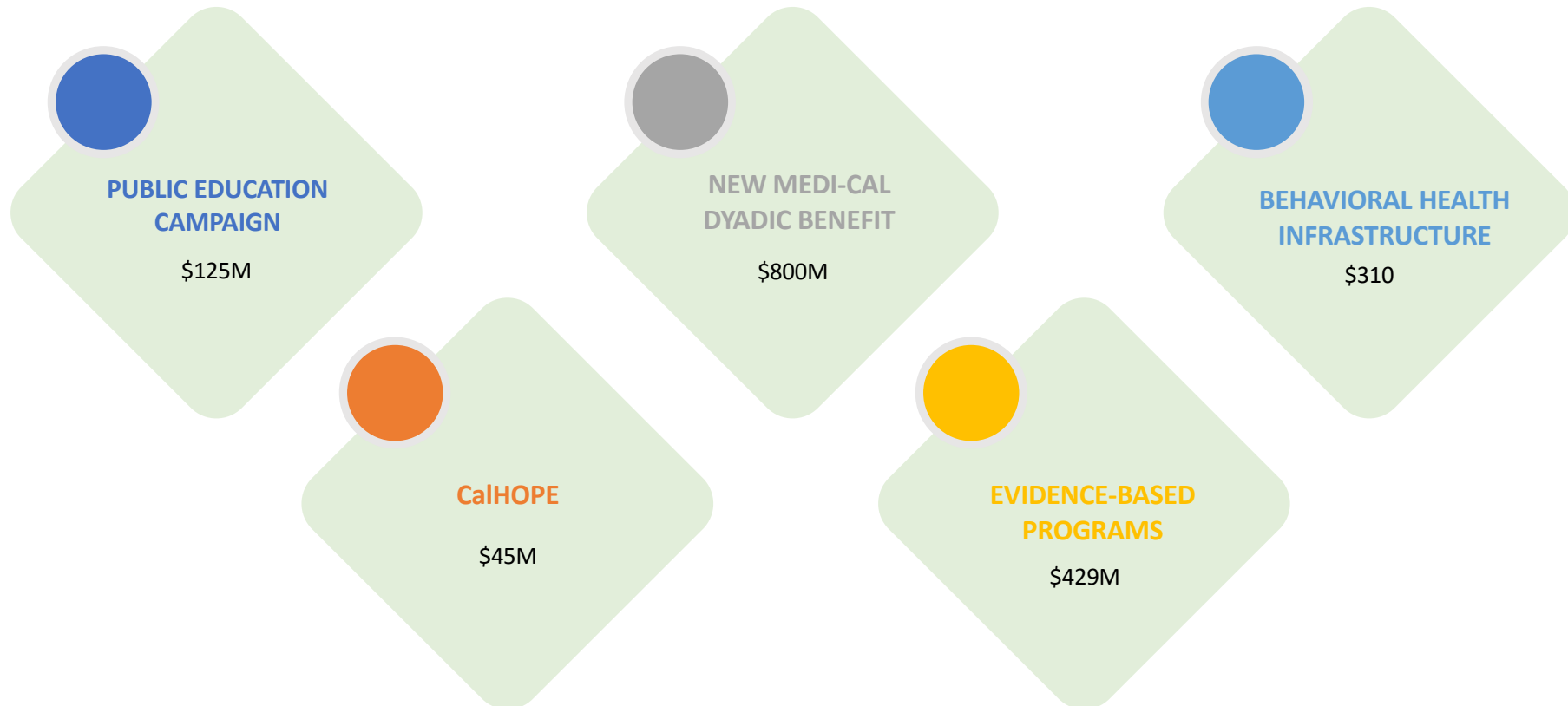
**06.**

VIRTUAL PLATFORM - \$750M

**Note:** Legislative language was very light on details. Details will be fleshed out through multiple stakeholder processes over the next couple years.

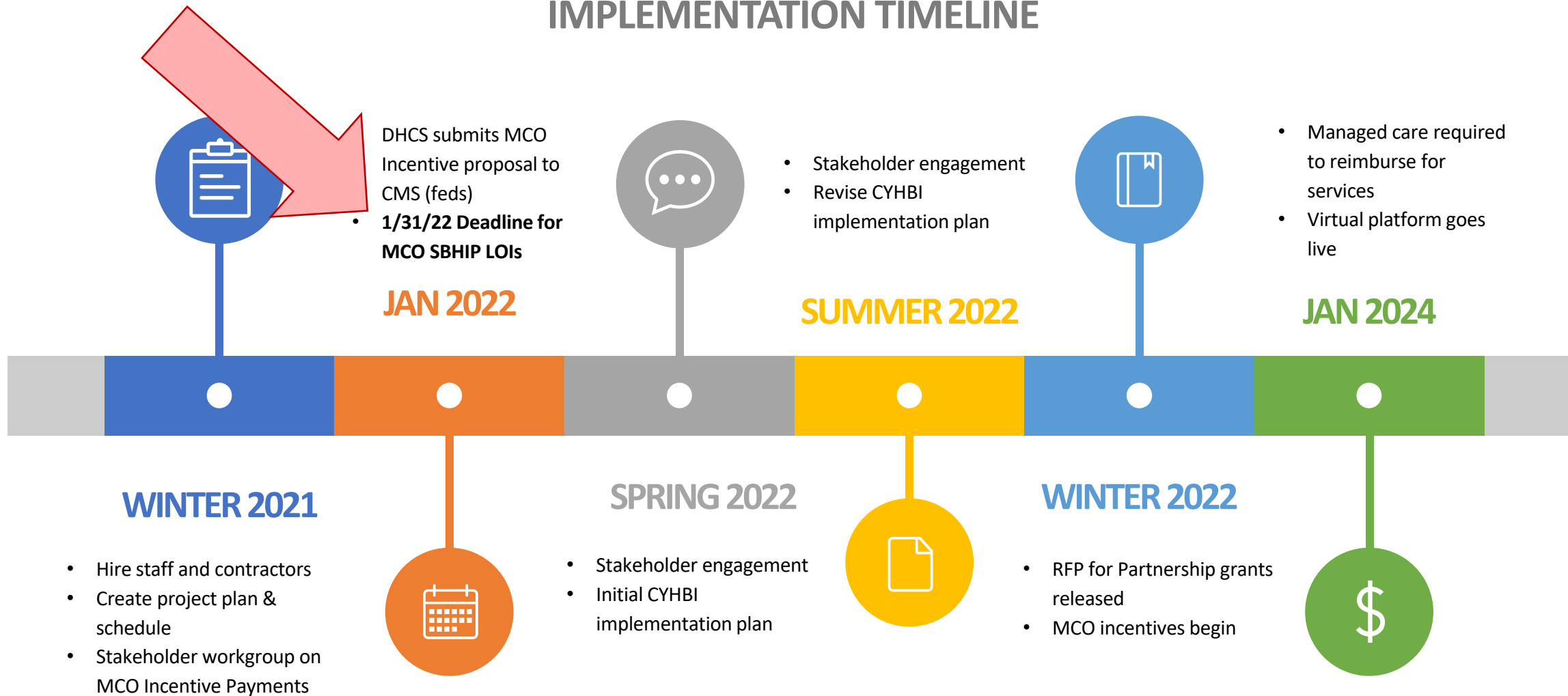
# CHILDREN AND YOUTH BEHAVIORAL HEALTH INITIATIVE

## ADDITIONAL PIECES

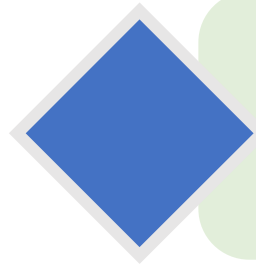


# CHILDREN AND YOUTH BEHAVIORAL HEALTH INITIATIVE

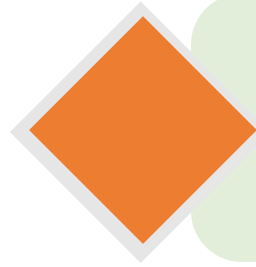
## IMPLEMENTATION TIMELINE



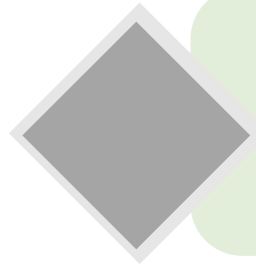
# UPDATES



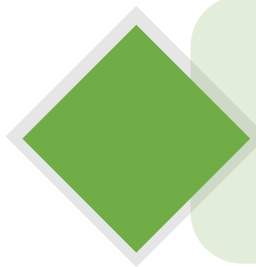
Melissa Stafford Jones has been hired by HHS to lead implementation and coordination of the Children & Youth Behavioral Health Initiative



The education coalition workgroup on behavioral health is meeting weekly in January and February with Melissa Stafford Jones and members of HHS, DHCS, and HCAI.



The education coalition will hold briefings with legislative staff in February to discuss the need for LEA BOP audit reform and solutions to education's behavioral health workforce shortage.



A bill will be introduced this year to make needed reforms to the LEA BOP audit and appeals process that will help LEAs receive more Medi-Cal reimbursement for behavioral health services.

# MEETINGS WITH CHILDREN & YOUTH BEHAVIORAL HEALTH LEAD

## Topics Covered

01

### WORKFORCE

Education's unique workforce requirements for behavioral health providers and workforce shortage issues.

### INVESTMENTS & SUSTAINABILITY

Summary of piece-meal and one-time investments made in student behavioral health and the need for sustainable funding

03

02

### FRAMEWORKS

Various programs and frameworks that education has adopted to address behavioral health needs, eg SEL, MTSS, community schools, PBIS.

### ALIGNMENT

How health investments could align with and improve education's accountability metrics through whole child and whole family support

04