



COVID-19

STUDENT & STAFF QUARANTINE/ISOLATION FLOW CHARTS - JANUARY 2022

Kern County
**Superintendent
of Schools**
...advocates for children



***FOR INTERNAL SCHOOL DISTRICT USE ONLY ***

TREE 1: STUDENT OR STAFF WITH SYMPTOMS

Student or staff has any of the following NEW symptoms with no known exposures:

Fever or chills
Cough
Shortness of breath
Difficulty breathing
Fatigue
Muscle or body aches

Headache
New loss of taste or smell
Sore throat
Congestion or runny nose
Nausea or vomiting
Diarrhea

EXCLUDE FROM SCHOOL

THREE OPTIONS...

1

COVID TEST

OR

2

Receive non-covid diagnosis from a health care provider.

OR

3

If no COVID test or non-COVID diagnosis from health care provider,
may return to school on **Day 11**
after symptom onset if at least 24
hours have passed since fever and
symptoms have improved significantly.

POSITIVE TEST

NEGATIVE TEST

ISOLATE

Individual must isolate at home. May return to school as early as **Day 6** after symptom onset with a negative test result collected on Day 5 or later, symptom improvement, and no fever.

*Must follow all recommended non-pharmaceutical interventions (e.g. wearing a well fitted face mask, especially in indoor settings, hand washing, avoiding crowds) through day 10. If a person chooses not to test, standard quarantine is 10 days returning with no symptoms and standard isolation is 10 days returning with symptom improvement.

RETURN TO SCHOOL

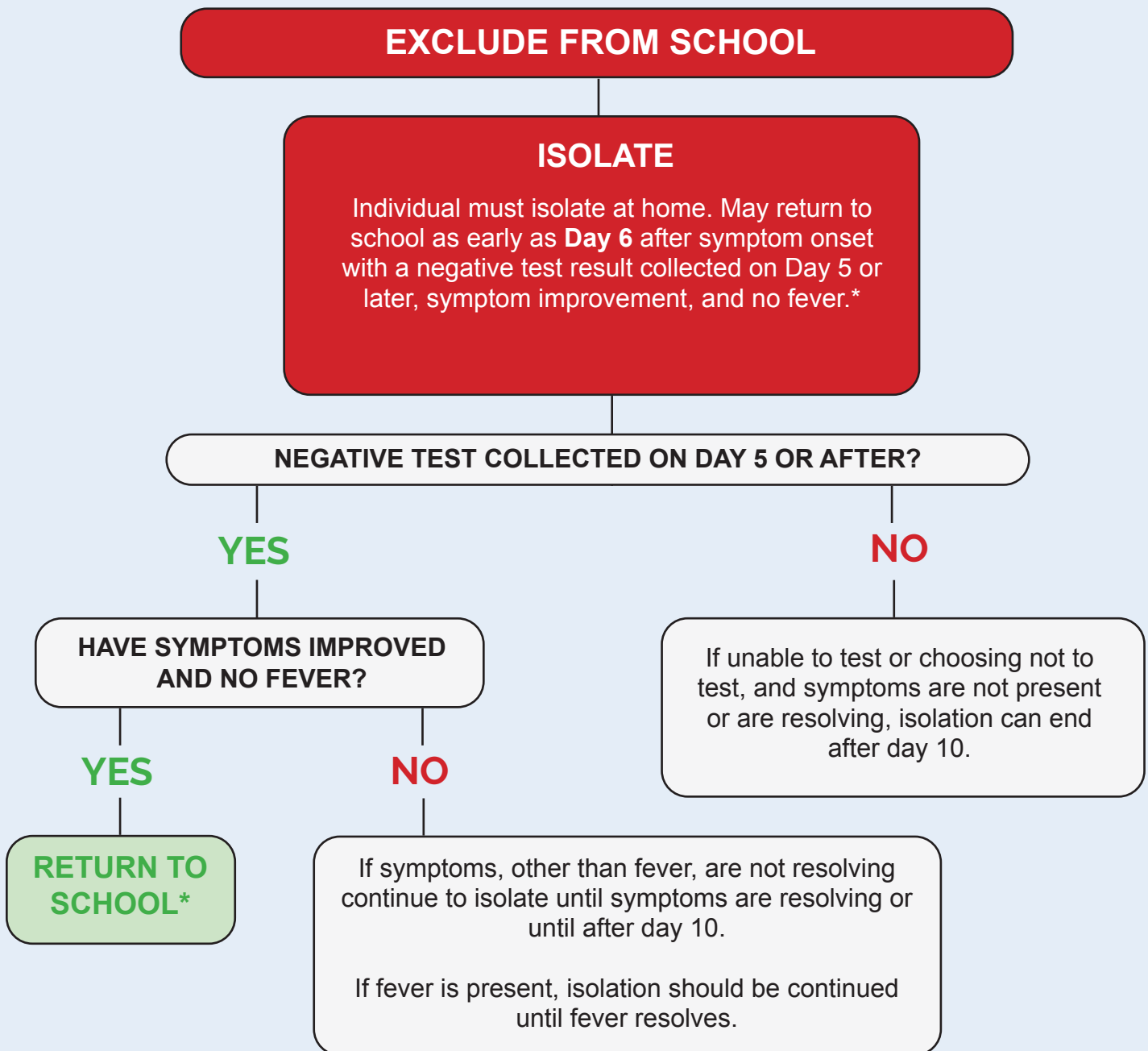
May return to school if at least 24 hours have passed since fever and symptoms have improved significantly.

BEGIN CONTACT TRACING

Identify all close contacts in the school setting and report using the provided spreadsheet and email to the following:

devlinm@kerncounty.com
and **jomendiburu@kern.org**

TREE 2: STUDENT OR STAFF WITH A POSITIVE TEST



*Must follow all recommended non-pharmaceutical interventions (e.g. wearing a well fitted face mask, especially in indoor settings, hand washing, avoiding crowds) through day 10. If a person chooses not to test, standard quarantine is 10 days returning with no symptoms and standard isolation is 10 days returning with symptom improvement.

TREE 3: POSITIVE CASE AT SCHOOL

INDIVIDUAL CONTACT TRACING (students only)

POSITIVE PERSON AT SCHOOL

Was the **positive person** within 6 feet of any student for a period that adds up to 15 minutes or more over a 24-hour period?

NO

No close contacts identified. No action needed.

YES

WAS THE CLOSE CONTACT FULLY VACCINATED?

Or have had COVID-19 in the past 90 days?

YES

IS THIS STUDENT SYMPTOMATIC?

YES

ISOLATE

Individual must isolate at home. May return to school site as early as Day 6 after symptom onset with a negative test result collected on Day 5 or later, symptom improvement, and no fever. *

NO

RETURN TO SCHOOL

May return to campus. Testing recommended.

NO

Were the positive case and the exposed student **BOTH** wearing masks?

YES

IN-SCHOOL MODIFIED QUARANTINE

Student may continue in-person instruction if asymptomatic. Test 2x per week for 10 days after exposure. No extracurricular activities during 10 days. Quarantine can end after 5 days with a negative test result.

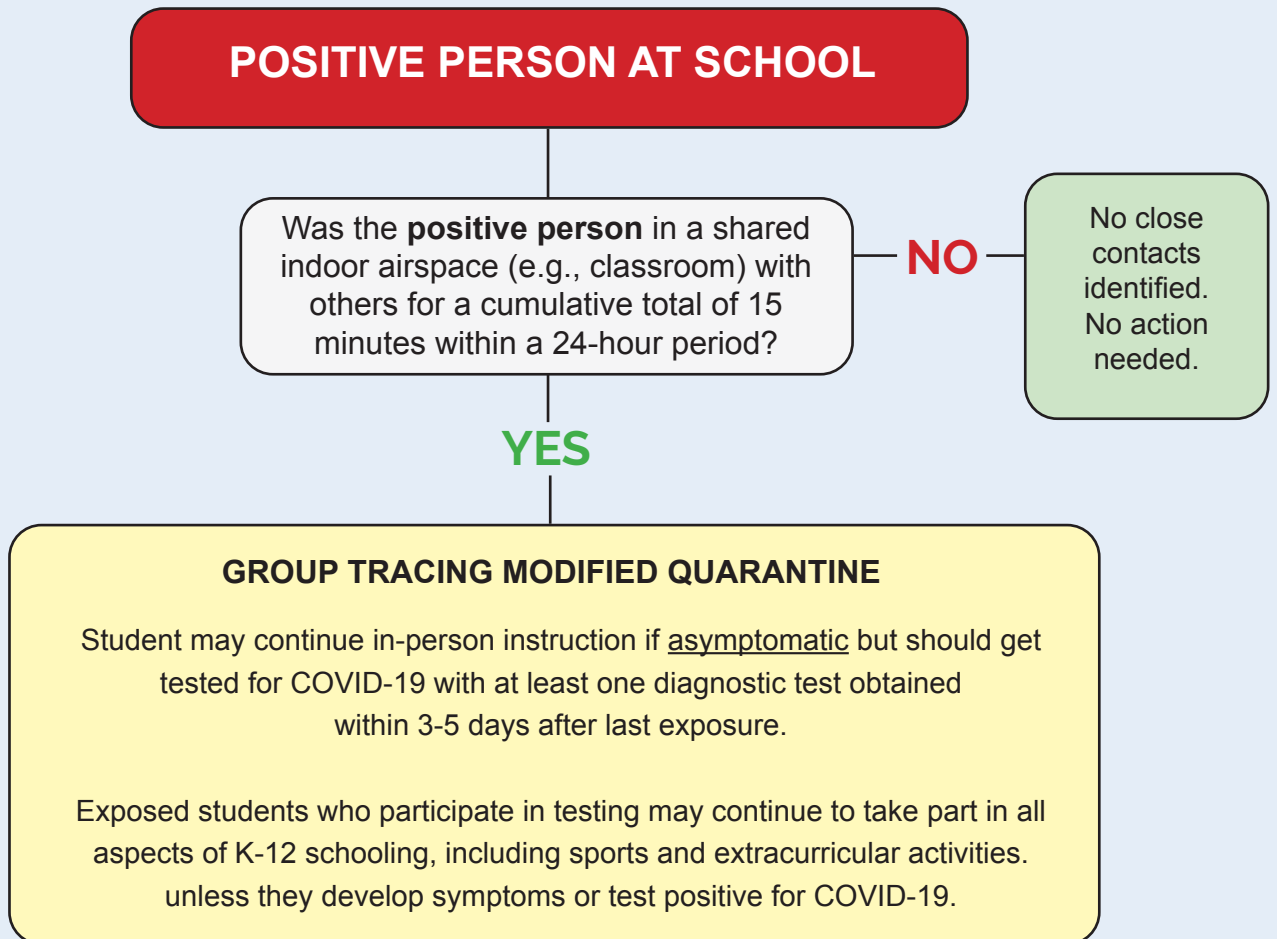
NO

QUARANTINE

Individual must quarantine at home. May return to school site as early as Day 6 after exposure with a negative test result collected on Day 5 or later, symptom improvement, and no fever. *

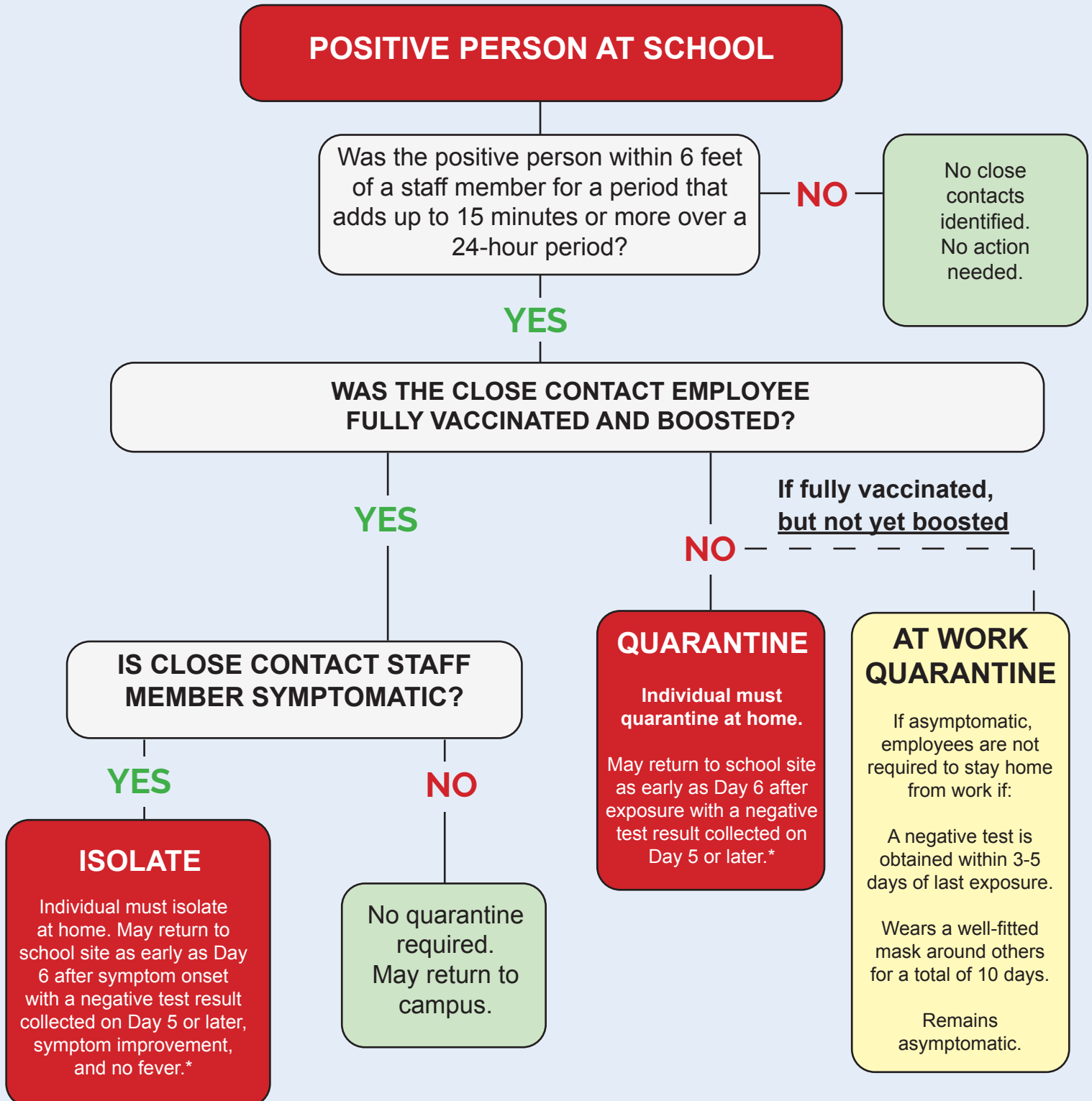
*Must follow all recommended non-pharmaceutical interventions (e.g. wearing a well fitted face mask, especially in indoor settings, hand washing, avoiding crowds) through day 10. If a person chooses not to test, standard quarantine is 10 days returning with no symptoms and standard isolation is 10 days returning with symptom improvement.

TREE 4:
POSITIVE CASE AT SCHOOL
GROUP CONTACT TRACING (students only*)



* Exposed students, regardless of COVID-19 vaccination status.

TREE 5: POSITIVE CASE AT SCHOOL FOR STAFF ONLY



*Must follow all recommended non-pharmaceutical interventions (e.g. wearing a well fitted face mask, especially in indoor settings, hand washing, avoiding crowds) through day 10. If a person chooses not to test, standard quarantine is 10 days returning with no symptoms and standard isolation is 10 days returning with symptom improvement.

TREE 6: IN-HOME EXPOSURE STUDENT OR EMPLOYEE

EXPOSURE TO COVID CASE WITH SOMEONE YOU LIVE WITH

**FOR STUDENTS: WAS THE CLOSE CONTACT STUDENT FULLY VACCINATED OR
HAS HAD COVID IN THE PAST 90 DAYS?**

- OR -

**FOR EMPLOYEES: WAS THE CLOSE CONTACT EMPLOYEE FULLY
VACCINATED AND BOOSTED?**

YES

SYMPTOMATIC?

NO

No quarantine
required.
May return to
school.

YES

ISOLATE

Individual must
isolate at home.
May return to school
site as early as Day
6 after symptom
onset with a
negative test result
collected on Day 5
or later, symptom
improvement,
and no fever.*

ISOLATE

Individual must isolate
at home. May return to
school site as early as
Day 6 after symptom
onset with a negative
test result collected on
Day 5 or later, symptom
improvement,
and no fever.*

NO

SYMPTOMATIC?

YES

NO

**Is ongoing close contact between the positive
case and others in the household occurring?**

NO

QUARANTINE

Individual must quarantine at home.
May return to school site as early as Day
6 after exposure with a negative test result
collected on Day 5 or later.*

YES

DELAYED QUARANTINE

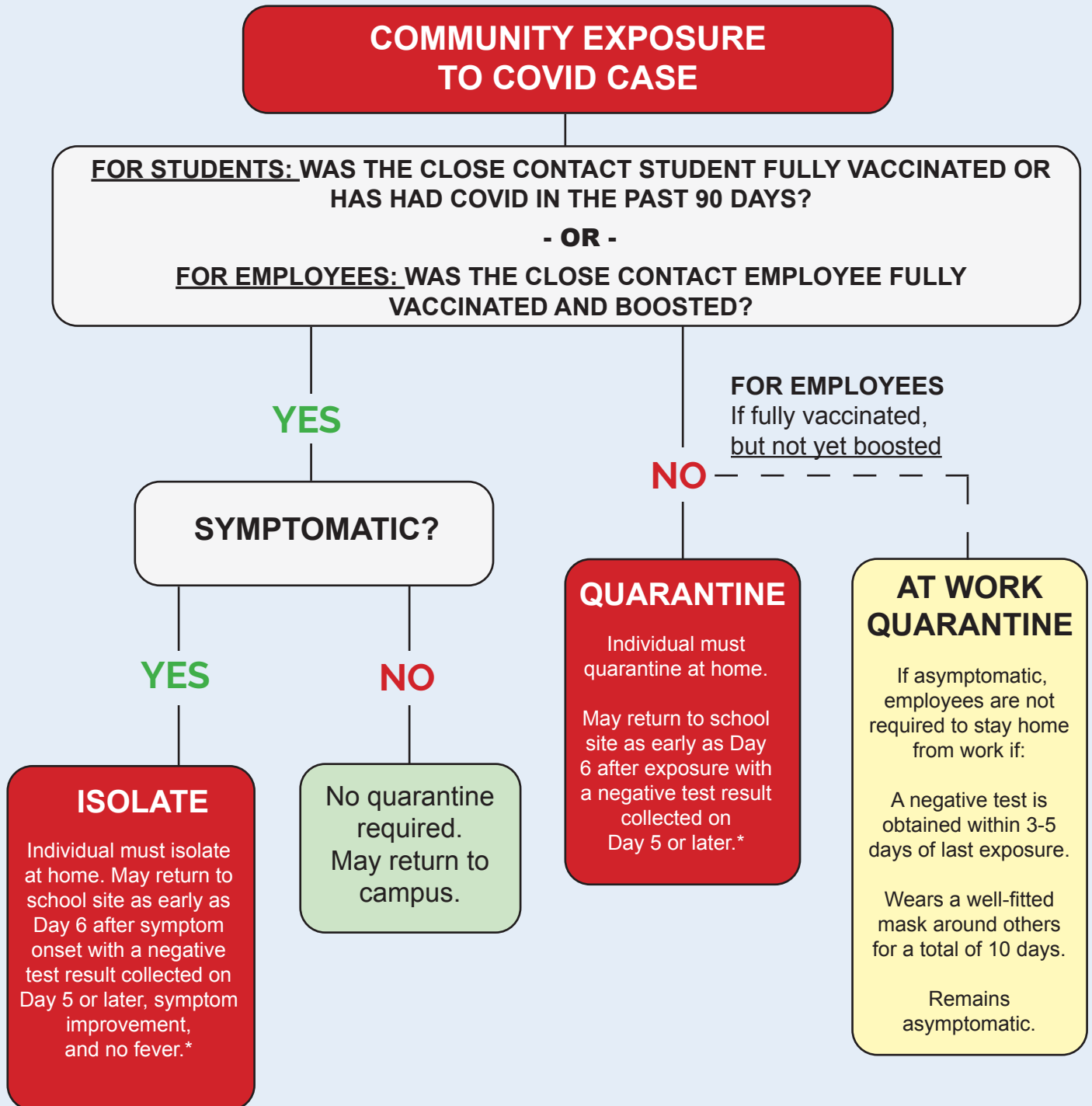
Quarantine the close contact for the duration of the
in-home positive case's isolation.

-THEN-

Individual must quarantine at home for an additional 5 days
minimum. May return to school site as early as Day 6 after
exposure with a negative test result collected
on Day 5 or later.*

*Must follow all recommended non-pharmaceutical interventions (e.g. wearing a well fitted face mask, especially in indoor settings, hand washing, avoiding crowds) through day 10. If a person chooses not to test, standard quarantine is 10 days returning with no symptoms and standard isolation is 10 days returning with symptom improvement.

TREE 7: IN-COMMUNITY EXPOSURE STUDENT OR EMPLOYEE



*Must follow all recommended non-pharmaceutical interventions (e.g. wearing a well fitted face mask, especially in indoor settings, hand washing, avoiding crowds) through day 10. If a person chooses not to test, standard quarantine is 10 days returning with no symptoms and standard isolation is 10 days returning with symptom improvement.

TREE 8:
PRESUMPTIVE POSITIVE CASE
STUDENT OR EMPLOYEE

