

**Supporting
Students,
Families, &
Schools
through...**

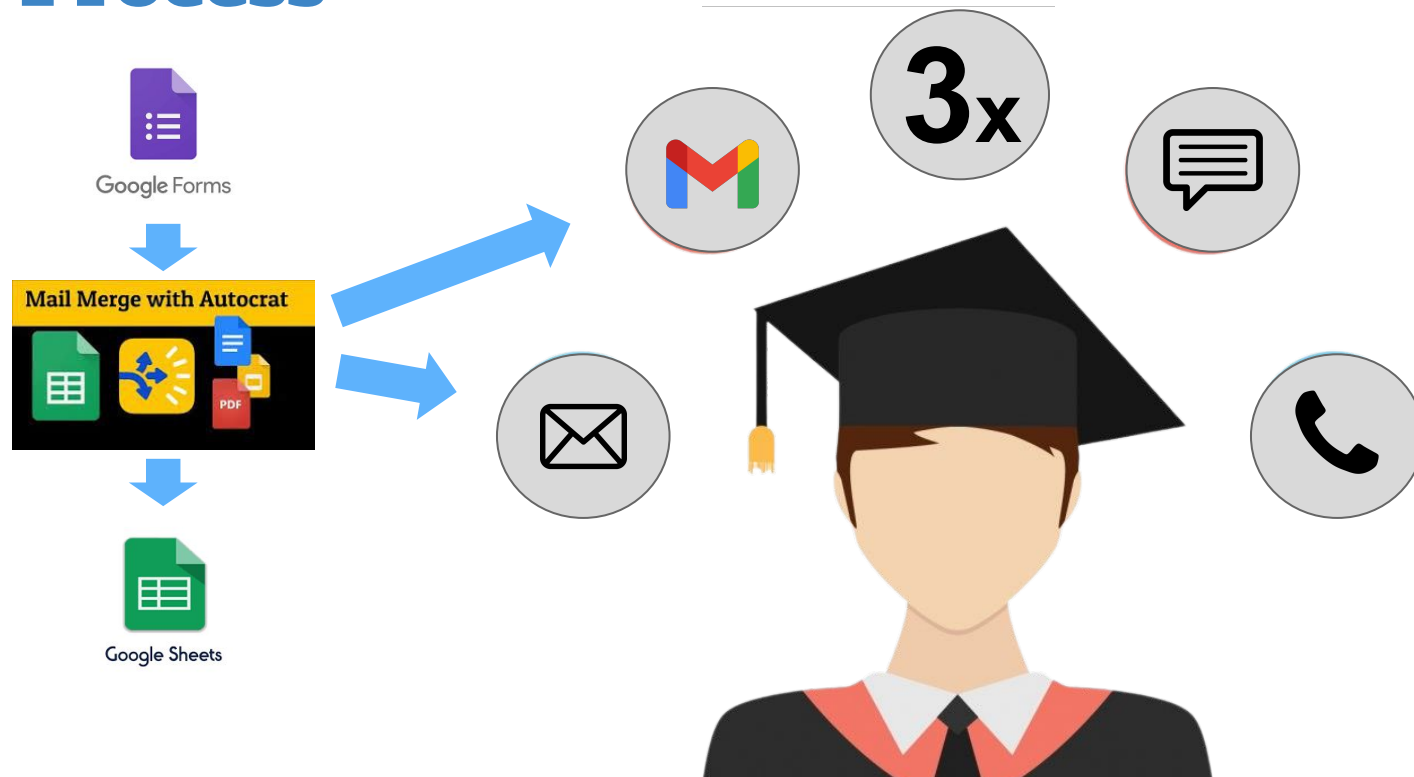


COMMUNITYCONNECT

— Shasta County Office of Education —



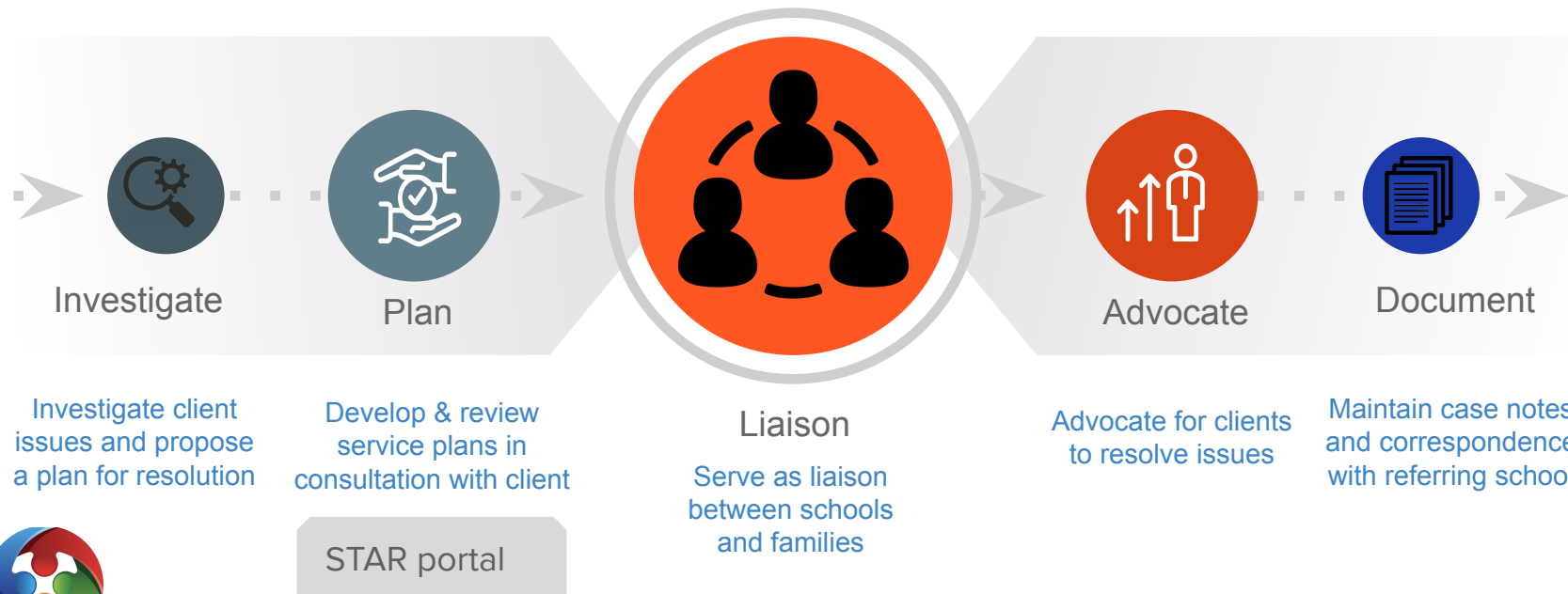
Process



What happens once a school refers a student & their family to CommunityConnect?

Social Work

Here are a few of our Care Coordinator's most common tasks



2020 - 2021 Impact



A little about the students referred to CommunityConnect...

Gender

55% Male

45% Female

A

Language

98% English

1% Spanish

C

600

Grade

57% Elementary

21% Middle School

22% High School

B

Student Group

14% IEP

12% Native American

9% Homeless

D



75% of referred students & their families

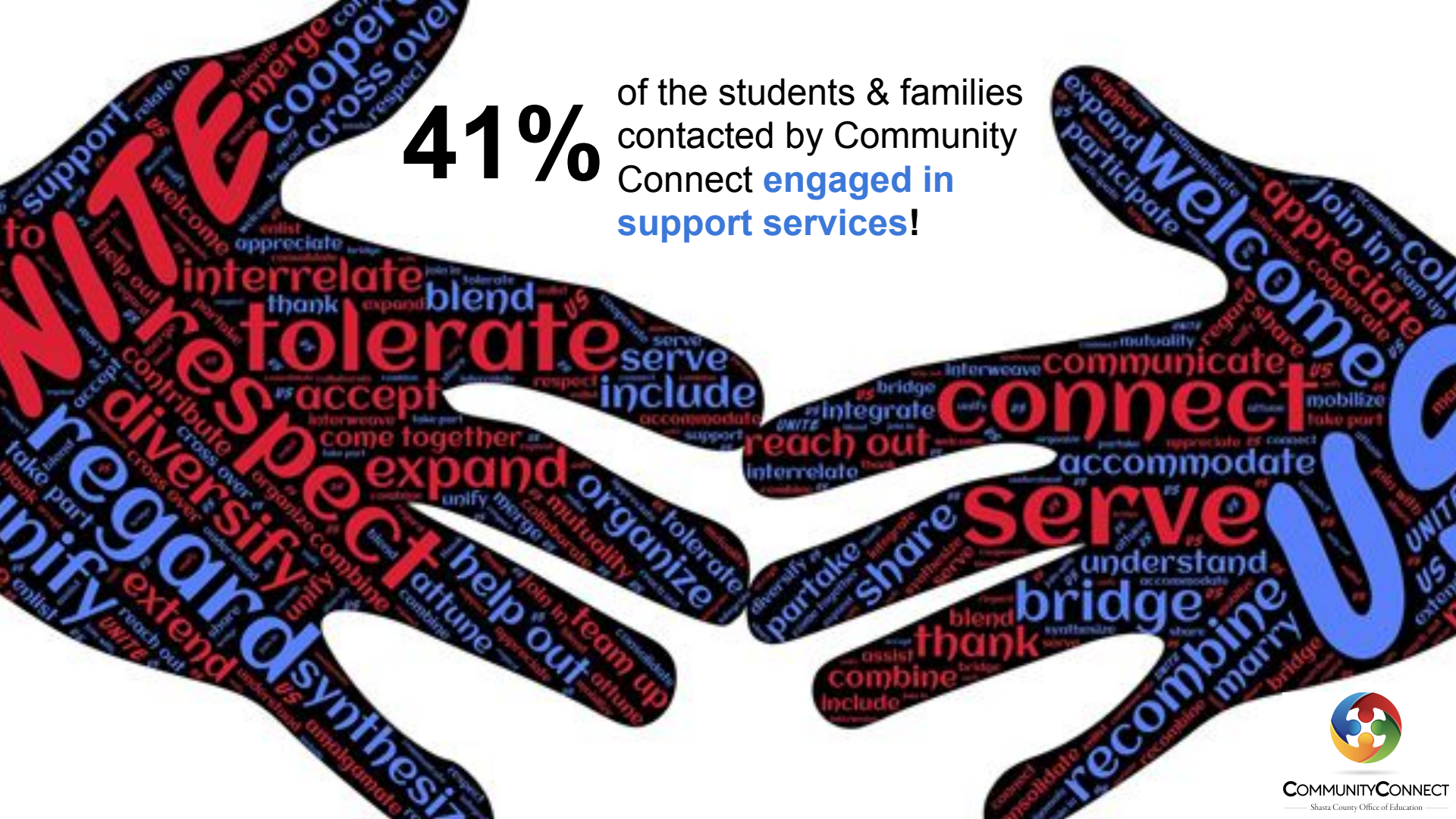
...that is a
connection with
447 families!



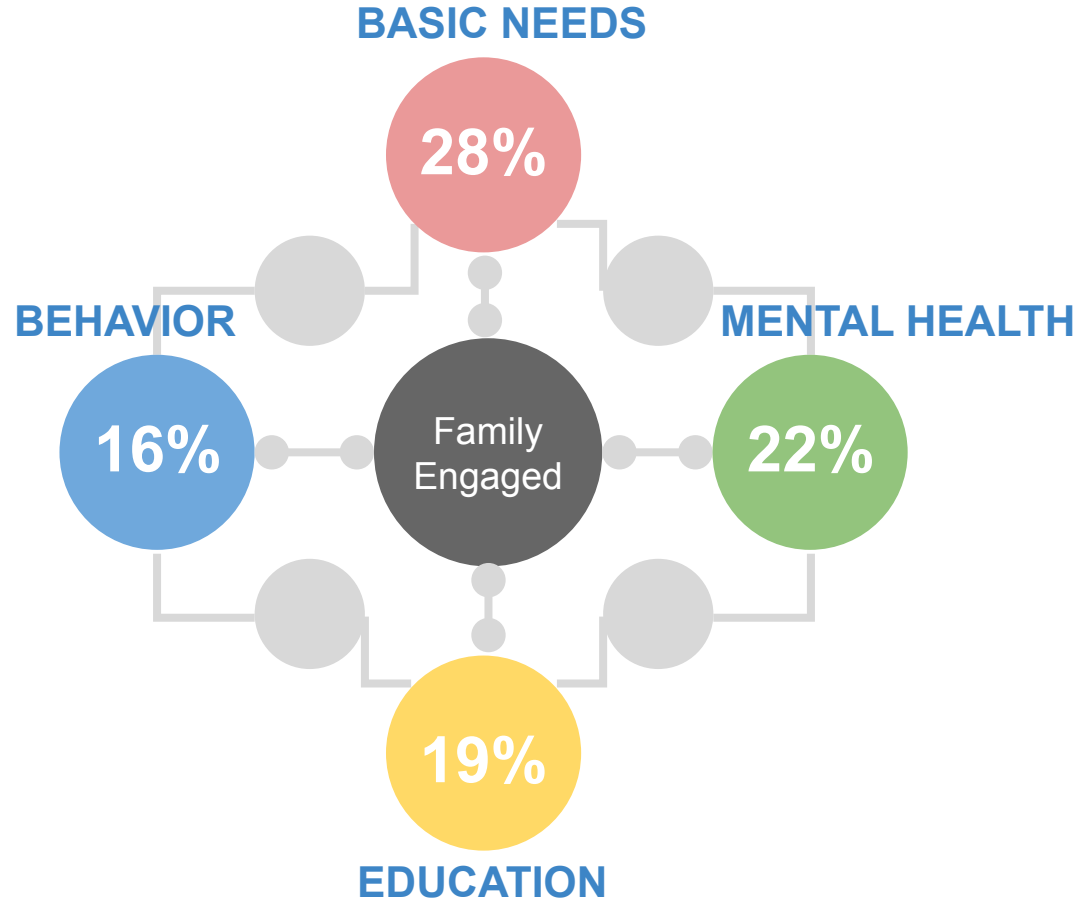
COMMUNITYCONNECT
 — Shasta County Office of Education —

41%

of the students & families
contacted by Community
Connect **engaged in
support services!**



Most Common Linkage to **Community** Based Resources



SART Referrals



COMMUNITYCONNECT
Shasta County Office of Education

Tier 3

Tier 2

Native
Students

FY/Homeless
Students

TK/K
Students

IEP/504
Students

SARB
Contracts
Previous Years

Current SARB
Students

Title VI
Coordinators

SCOE
FY/Homeless
Care
Coordinators

Pathways to
Hope Parent
Partners

In
Conversations
with Districts
and SELPA

SCOE

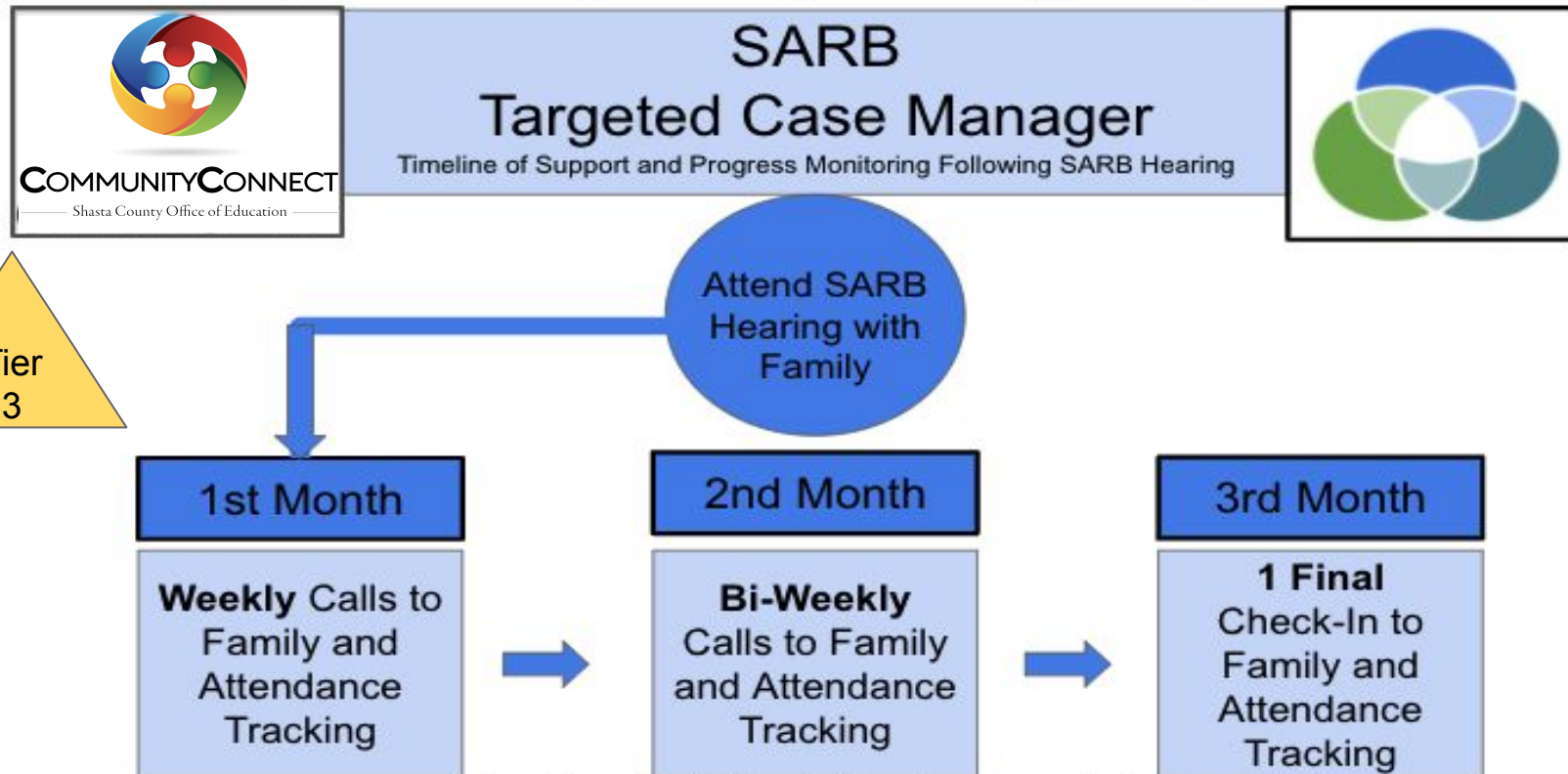
SCOE Targeted
Case Manager
(Licensed
Clinical Social
Worker)





2020 - 2021 Pilot



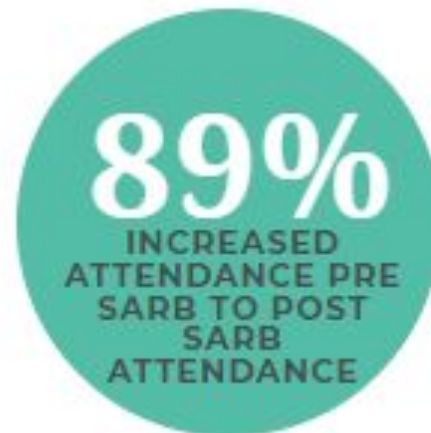
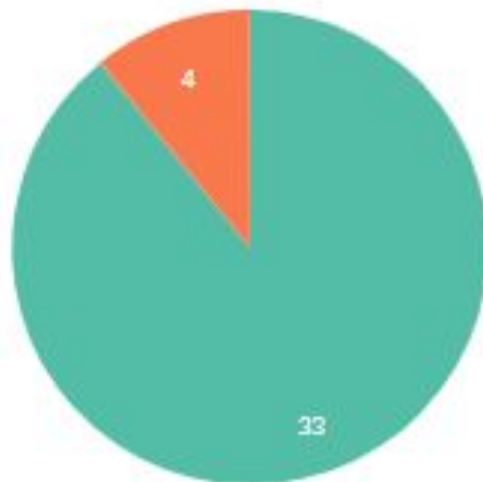
Targeted Case Manager Time-Line of Support and Progress Monitoring (Graphic)

*School is contacted if and when improvement stops.

Data-Case managed attendance percentage Pre SARB vs. Post SARB

POST SARB ATTENDANCE

N=37



- Post SARB Attendance Increased Attendance (Average increase of 70%) (89.19%)
- Post SARB Attendance Decreased Attendance (10.81%)



Data-Case managed attendance percentage Pre SARB vs. Post SARB

43%

**ABOVE 90% FOR
ATTENDANCE
=NOT CONSIDERED
CHRONICALLY
ABSENT (PRE TO
POST SARB)**

**OF THE 43%, PRE
SARB AVERAGE
ATTENDANCE
RATE WAS 61%.**



2021 - 2022 Additions



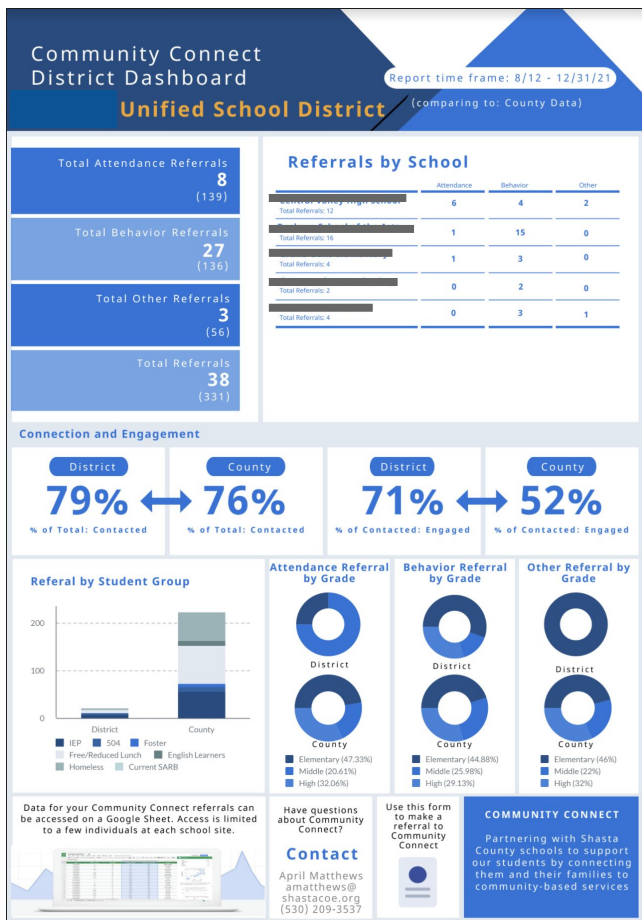
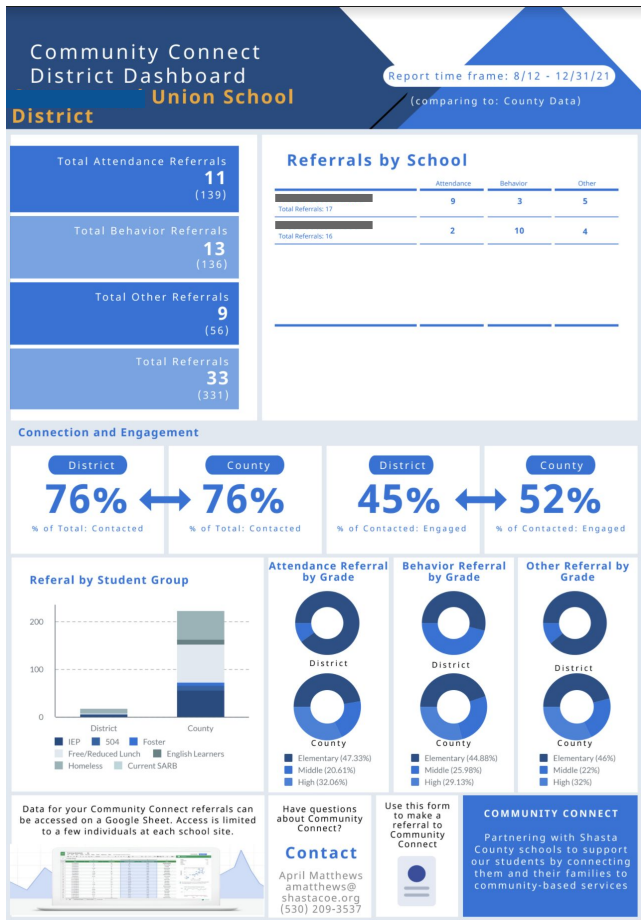
2021 - 2022

- Received a CCSPP grant on behalf of all 25 school districts in Shasta County to add **behavior & mental health** services as part of the CommunityConnect referral process.
- Received funding and staff from Shasta County HHSA to expand this work, including to Community Day Schools.
- Began to track early childhood referrals - saw a pattern in the data of low attendance rates for preschool children (beginning in 2017).



SHASTA
COUNTY OFFICE OF
EDUCATION

District to County Comparison Data



2021 - 2022 Impact



Community Connect Referrals from August - December 2021

The data on this dashboard represents student and family referrals to Community Connect from our Shasta County System of Support (SOS) Initiative for attendance, behavior, and additional support services for students who are homeless, in foster care, or those with COVID



139

Attendance Referrals



131

Behavior Referrals



56

Other Referrals



72%

% of Total: Contacted



71%

% of Contacted: Engaged

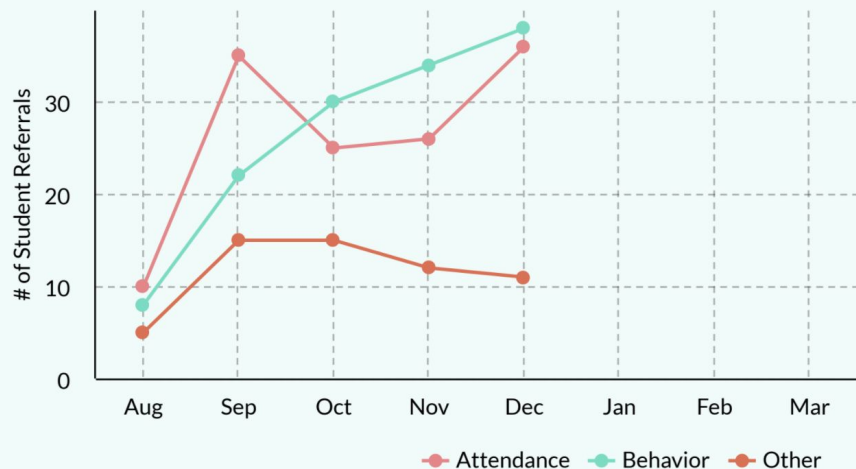


331

Total Referrals

Community Connect Referrals from August - December 2021

Number of Student Referrals by Month

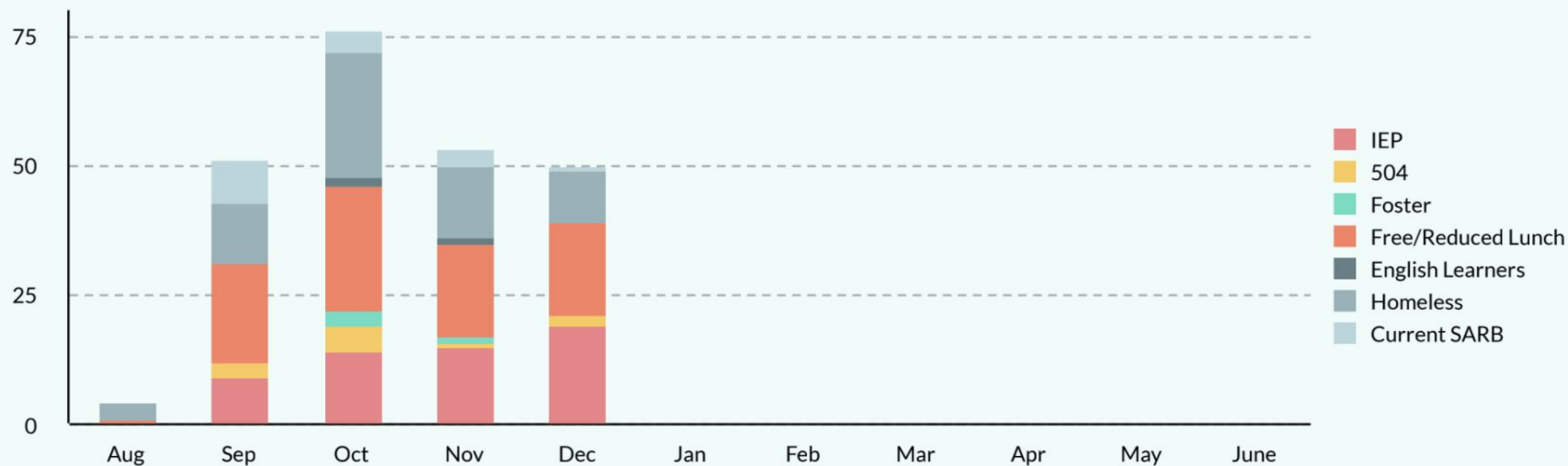


Referrals from 53 schools (71% of schools in the county)

- 42% from elementary schools
- 40% from middle schools
- 17% from high schools

Community Connect Referrals from August - December 2021

Referral by Student Group

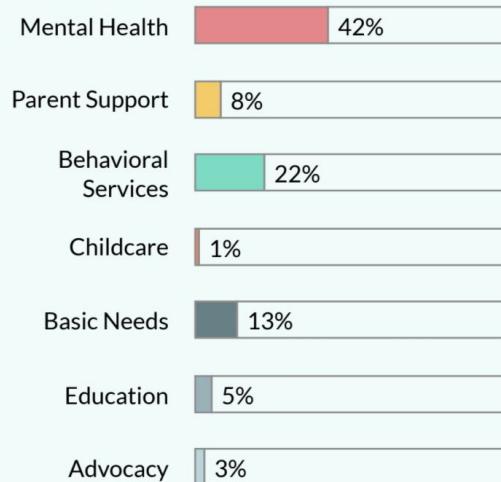


Linking to Community-Based Services

Community Connect works directly with a student's family to ensure linkage to community-based services and supports. Here are a few examples of the organizations they have been linked to:

SCOE - Bridges to Success, Dunamis Wellness Center, North American Mental Health Services, Pathways to Hope - Family Resource Center (Redding), Family Dynamics, SCOE - Early Childhood Services (ECS), Redding CalFresh Outreach Program, Creekside Counseling Center, Dunamis Center - Mental Health Services, Guidepost Counseling for Wellness, IMPACT Invo, NVCSS - Redding Office, Partnership Health Plan of California, CalFresh Food Program, Catalyst Mentoring, Family Dynamics, HHSA CFAP, SCOE Youth Support Services, Shasta Options, Anderson Regional Office, Kids Turn, Higher Ground Counseling, Martin Luther King Jr. Center, One Safe Place, Guidepost Counseling for Wellness, Wright Education Services, Clear Pathways, Exodus Farms Ministry, Private Psychologist, Math Tutoring Center

Type of Service Requested



Early Childhood Referrals: August - December 2021



317

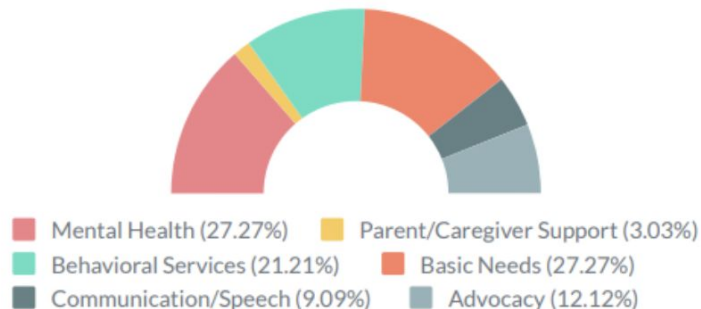
Total Referrals



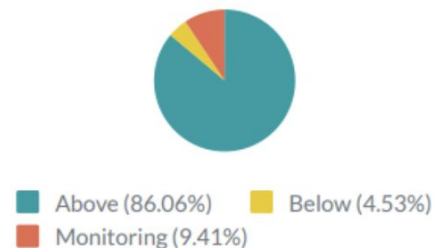
287

Total ASQ Screening

Type of Service Requested



ASQ Scores



Linked with Help Me Grow

Learnings:

- We can't expect our school attendance and behavior monitoring teams to know of all the resources available to students & families in our community.
- With small, rural schools and a smaller county, there are not enough supports to place on every school campus.
- Supporting schools through this system & gathering the data countywide has made a case for the needs of students - within student groups and within specific areas (ex. crisis) to agencies within the county.

Questions?

