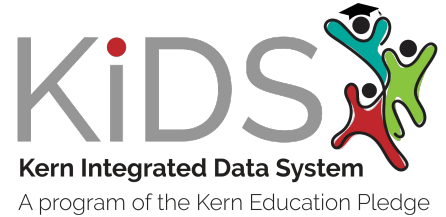


Kern County
**Superintendent
of Schools**
Office of Mary C. Barlow
...advocates for children



Data As an Equity Lever

Our Why

*“No single program or institution can **single-handedly** solve the complex, large-scale, education and workforce readiness challenges facing our community.”*

*— Dr. Mary Barlow, Superintendent
Kern County Superintendent of Schools*

Who are we serving?



- ☐ 46 Traditional School Districts
- ☐ 6 Charter Schools
- ☐ 265 total TK-12 Schools
- ☐ 4 Community Colleges
- ☐ 1 University



- ☐ 198,000 Total K-12 Students
- ☐ 75% Unduplicated Count
- ☐ 18% English Learners

KERN EDUCATION PLEDGE

Successful, equitable and healthy communities foster education and career success and align their institutions and resources to advance that vision. Every student needs and deserves an opportunity to earn a postsecondary certificate, credential or college degree. The creation of the Kern Education Pledge stems from a shared belief that no single program or institution can single-handedly solve the complex, large-scale, education and workforce readiness challenges facing our community. Improving student outcomes at scale requires innovative and sustained collaboration across institutions to achieve significant and lasting change. As a result, the educational leaders in Kern County have created an alliance to begin the work of transforming our educational system from cradle to career. Recognizing that achieving our goals requires innovative and sustained collaboration across institutions, we envision additional community partners joining this pledge going forward.

OUR GOALS

The Kern Pledge signatories will regularly measure their progress in pursuit of the following goals:

- Increase the percentage of children entering school, ready to learn.
- Increase the percentage of students reading at grade level by the end of 3rd grade.
- Increase the percentage of students demonstrating core math proficiencies by the end of 5th grade.
- Increase the percentage of students demonstrating reading and math proficiency by the end of 8th grade.
- Increase the percentage of high school students graduating, ready to succeed.
- Increase the percentage of students enrolling in and completing post-secondary programs and entering the skilled workforce.

OUR PLEDGE

1. We pledge to meet regularly, recognizing that our work is generational and requires long-term stakeholder commitment.
2. We pledge to work together within an environment of co-learning and collaboration.
3. We believe that we are better together as a collaborative partnership than as individual institutions and pledge to share best practices, services and resources.
4. We are committed to innovation and possibility thinking to achieve greater outcomes for all students.
5. We pledge to share student data to set baseline measures and monitor progress toward achieving our goals.

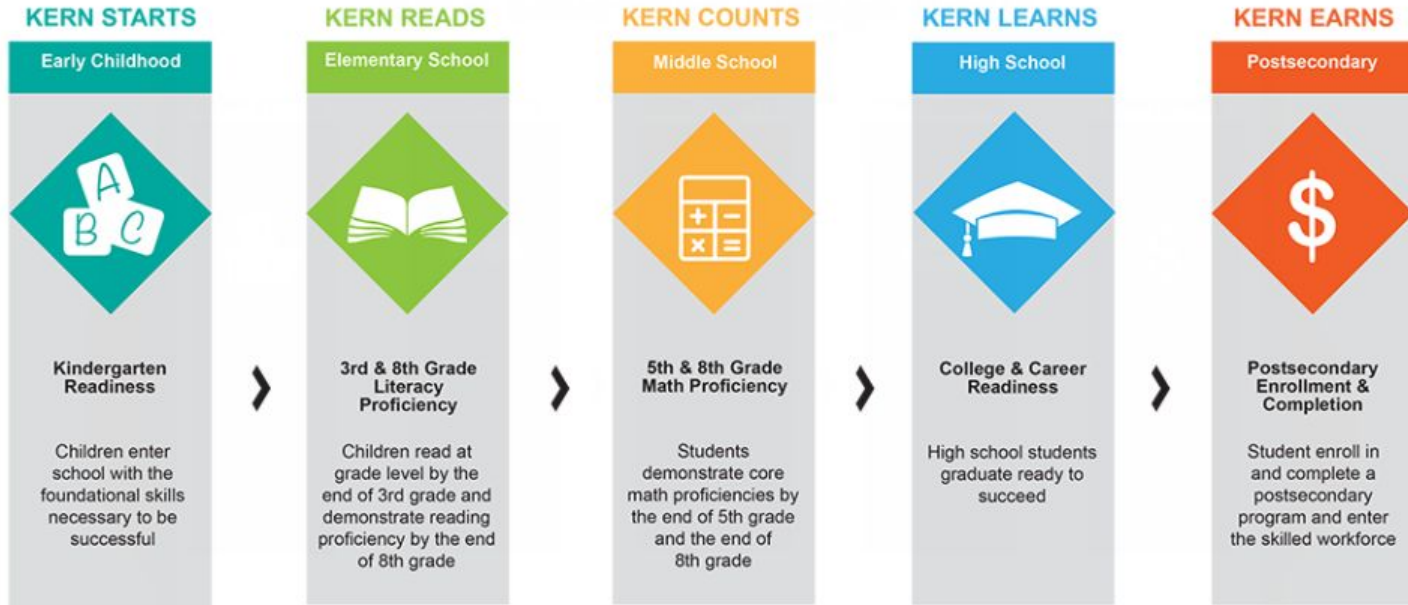
We, the undersigned chief executive officers of our respective institutions, will work together on all the activities that comprise the Kern Pledge.

Established April 28, 2017. Re-pledged on the 11th day of December, 2018.

[illegible]

5. We pledge to share student data to set baseline measures and monitor progress toward achieving our goals.

Kern Pledge



“

Kern Education Pledge members are committed to taking collaboration to the next level by formalizing data sharing and engaging in activities around shared responsibility and shared accountability.

- Dr. Barlow, Kern County Superintendent of Schools



Kern Integrated Data System

A program of the Kern Education Pledge



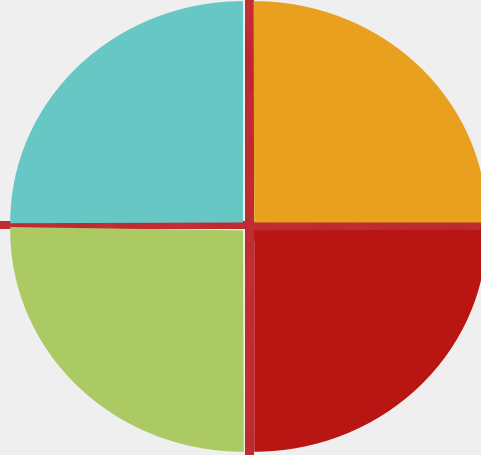
Essentials

Demographics, Attendance, Behavior, Academics, Assessments and Classroom

Data management and analytics tools to track and meet federal, state, and local accountability requirements and transform the

Human Capital and Operations

Correlate staff data with what's really happening in the classrooms, advanced tools to optimize finance data, and manage staff operations



Early Warning & Intervention System

Inform Multi-Tiered Systems of Support by combining various data points including attendance, behavior, assessment scores, grades, GPA and credit completion.

Student Success

By Summarizing key data points for High School Graduation and beyond, Student Success assists educators in preparing students to reach their full potential and persist in high school, post-secondary education, and career.

Holistic

To ensure student equity and success, educators **MUST** focus on the whole student



Decentralized

Democratize data to create opportunities for teacher-teacher and teacher-family collaboration



Real-Time

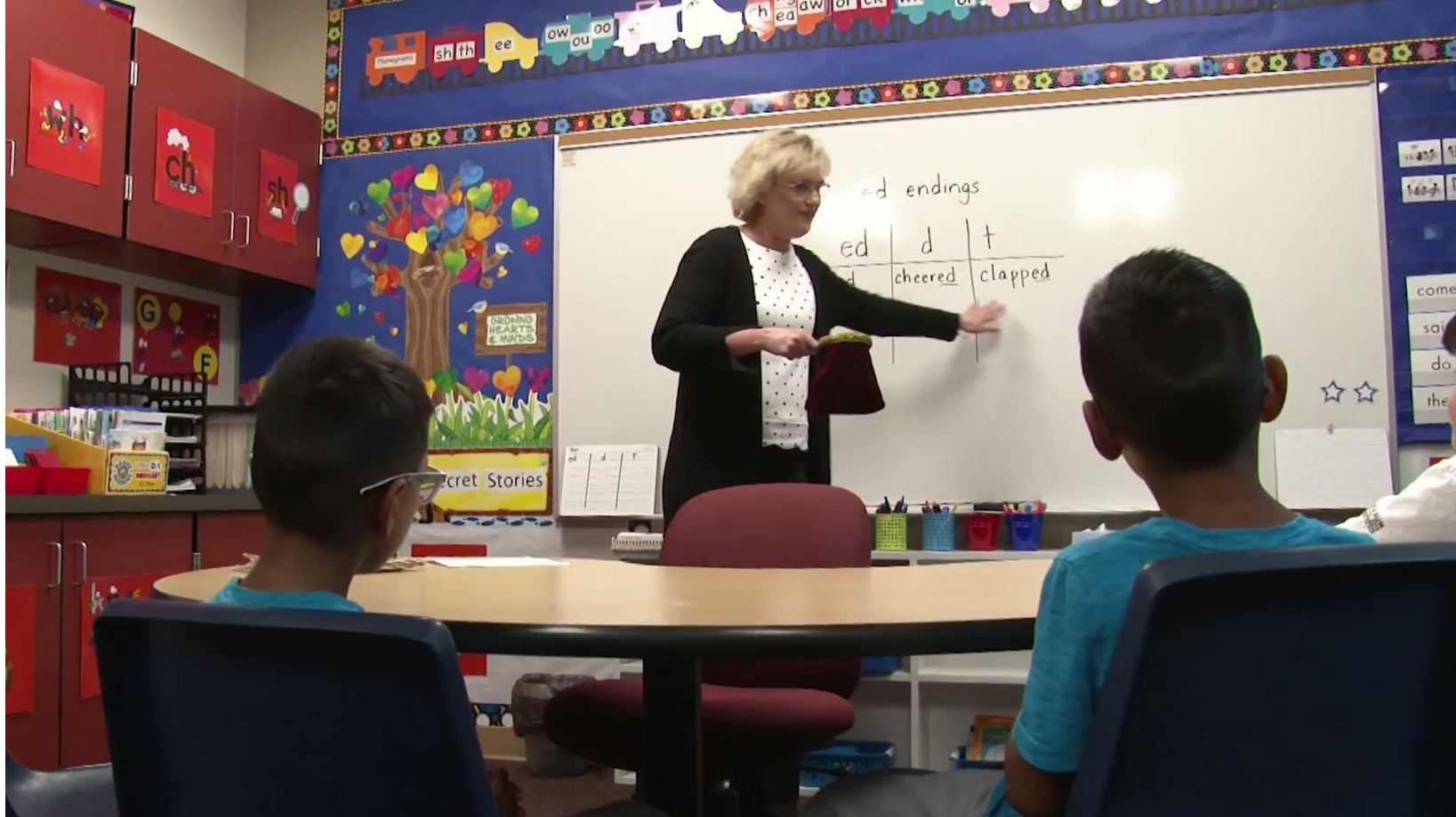
Remove barriers which prevent educators from making informed decisions in the moment to support student learning



DATA INFORMED CULTURE

Responsive, equitable schools and classrooms where every child and family is supported and engaged in learning





Kern Integrated Data System



Krista Herrera, Ed.D.
 Administrator of Professional Learning
 and Student Support
 Kern County Superintendent of Schools
krherrera@kern.org

Heather Richter, Ed.D.
 Administrator of Continuous Improvement
 Kern County Superintendent of Schools
herichter@kern.org

Greg West
 Director II-Kern Integrated Data System
 Kern County Superintendent of Schools
grwest@kern.org