

# **Equity Blueprint for Action**

**Dr. Paul Gothold**

**Superintendent, San Diego County Office of Education**

# Socially Conscious Leadership: Equity Themes

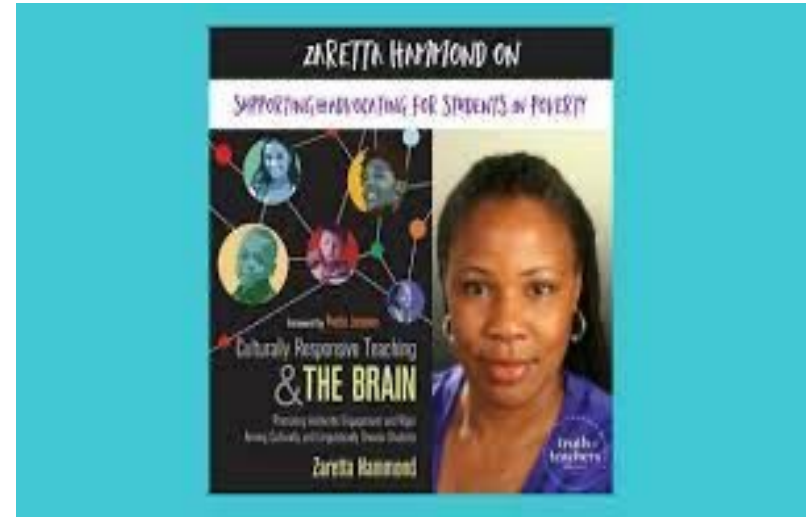


## Socially Conscious Leadership

**Socially-conscious leaders serve, inspire, and empower through their own examples. They explore their own intersecting identities, analyze their mindsets, and hone their skills. They seek to create equity-centered, asset-based systems by implementing and sustaining positive changes that benefit those they serve. They focus their efforts on creating equitable access with consistently strong outcomes for all students, paying special attention to the needs of historically marginalized populations.**

# Zaretta Hammond

“When we deem students behind academically, we increase compliance measures and actually decelerate learning”





@SanDiegoCOE



san diego county office of  
**EDUCATION**  
FUTURE WITHOUT BOUNDARIES

Community feedback identified four cross-cutting focus areas associated with [socially conscious leadership](#). Socially-conscious leaders seek to create equity-centered, asset-based systems by implementing and sustaining positive changes that result in consistently strong outcomes for all students, paying special attention to the needs of historically marginalized populations.



## FOCUS AREAS

- Asset-Based Systems
- Culturally and Linguistically Responsive Instruction
- Family and Community Voice
- Student Agency and Voice

DR. ALBERTO OCHOA  
San Diego State University



DR. JOELY PROUDFIT  
CSU San Marcos

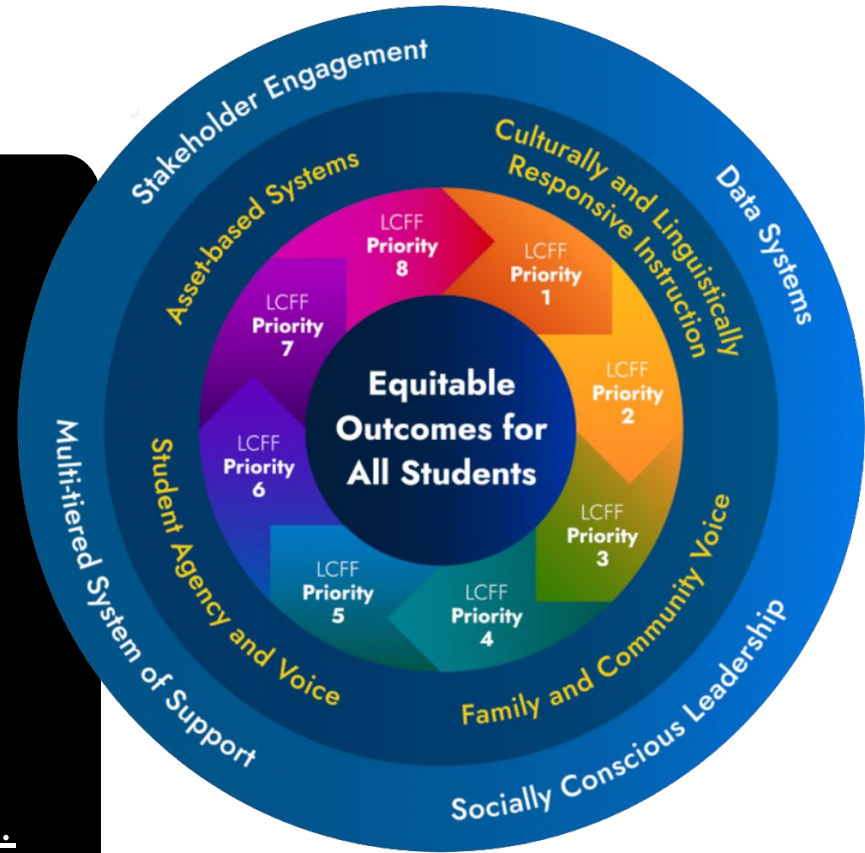
DR. JOSEPH JOHNSON  
San Diego State University



# EQUITY BLUEPRINT FOR ACTION

The Equity Blueprint for Action website can be found at:

<https://equityblueprint.sdcoe.net.>







# What Makes the Blueprint

## Unique?

- **Story and Raw Data:** includes actual quotes from community members and models how to listen deeply and co-construct
- **Local Control Funding Formula (LCFF) alignment:** ensure these strategies live within Local Control and Accountability Plans (LCAPs)
- **Compendium Website:** supports multiple entry points (i.e., district, school, classroom)
- **Professional Learning Calendar** (in progress): provides a free offerings to support implementation

# Will Demographics Still Predict Student Success in 2025?

*Turning Funding into a New Future  
for Our Students*